

WAWAW SUMMER

NORTH COAST

01 days
of magic

02 location
map

03 masterplan

04 amenities
and facilities

05 renders

06 floor
plans

Days of Magic

Summer is more than just a vacation retreat; it's a blank canvas awaiting the strokes of your imagination to create a masterpiece of summer winks. Every moment here holds the promise of memories carved in time and stories that linger long after the season fades.



Ras El Hekma	4 KM
Al Alamein	118 KM
Borg El Arab	182 KM
Alexandria	201 KM
Cairo	350 KM

Location map



Marsa Matrouh

Sidi Heneish

Almaza Bay

Hacienda Heneish

Silversands

El Abd Resort

Marsa Baghush

Ras El Hekma

246 KM
Alexandria - Matrouh Rd



Master-planned with Artery

Created by the venerated WATG, Summer unveils "The Serpentine - Braids of Life" concept, a fusion of water, greenery, and entertainment. From the entrance to the beach, you find premium islands and exclusive beaches that ensure you see nothing but blue water, greenery, and yellow sands across your journey from the gate to the beach.

With three elevated platforms boasting stunning sea views, "Summer" is a symphony of luxury and leisure, where every corner tells a story made of picturesque views.



Masterplan phase (1)



Disclaimer: The masterplan is an artist impression, actual product may vary

Amenities and Facilities



**Water
features**



**Kids
area**



**Commercial
and retail**



**Sports
facilities**



**Mix hospitality
services**



**Entertainment
experiences**



Disclaimer

1. All dimensions will be Measured as Carpet Area.
2. Actual area may vary from the stated area.
3. Drawing areas not to scale.
5. All materials, dimensions and drawings are approximate information, and subject to change without notice.
6. Actual unit areas, front windows, Arches, Terraces, and Exterior trim Detail may vary by Design Development & elevation styles.
7. Parking and Ramps are under development and may vary according to Master plan Design update.

The elegance of contemporary design with spacious interiors, abundant natural light, and breathtaking sea views.



Disclaimer

1. All dimensions will be Measured as Carpet Area.
2. Actual area may vary from the stated area.
3. Drawing areas not to scale.
5. All materials, dimensions and drawings are approximate information, and subject to change without notice.
6. Actual unit areas, front windows, Arches, Terraces, and Exterior trim Detail may vary by Design Development & elevation styles.
7. Parking and Ramps are under development and may vary according to Master plan Design update.

The elegance of contemporary design with spacious interiors, abundant natural light, and breathtaking sea views.



Disclaimer

1. All dimensions will be Measured as Carpet Area.
2. Actual area may vary from the stated area.
3. Drawing areas not to scale.
4. All materials, dimensions and drawings are approximate information, and subject to change without notice.
5. All materials, dimensions and drawings are approximate information, and subject to change without notice.
6. Actual unit areas, front windows, Arches, Terraces, and Exterior trim Detail may vary by Design Development & elevation styles.
7. Parking and Ramps are under development and may vary according to Master plan Design update.

The elegance of contemporary design with spacious interiors, abundant natural light, and breathtaking sea views.

Seafront Villas



Disclaimer

1. All dimensions will be Measured as Carpet Area.
2. Actual area may vary from the stated area.
3. Drawing areas not to scale.
4. All materials, dimensions and drawings are approximate information, and subject to change without notice.
5. All materials, dimensions and drawings are approximate information, and subject to change without notice.
6. Actual unit areas, front windows, Arches, Terraces, and Exterior trim Detail may vary by Design Development & elevation styles.
7. Parking and Ramps are under development and may vary according to Master plan Design update.

The elegance of contemporary design with spacious interiors, abundant natural light, and breathtaking sea views.



Disclaimer

1. All dimensions will be Measured as Carpet Area.
2. Actual area may vary from the stated area.
3. Drawing areas not to scale.
5. All materials, dimensions and drawings are approximate information, and subject to change without notice.
6. Actual unit areas, front windows, Arches, Terraces, and Exterior trim Detail may vary by Design Development & elevation styles.
7. Parking and Ramps are under development and may vary according to Master plan Design update.

The elegance of contemporary design with spacious interiors, abundant natural light, and breathtaking sea views.



Disclaimer

1. All dimensions will be Measured as Carpet Area.
2. Actual area may vary from the stated area.
3. Drawing areas not to scale.
4. All materials, dimensions and drawings are approximate information, and subject to change without notice.
5. All materials, dimensions and drawings are approximate information, and subject to change without notice.
6. Actual unit areas, front windows, Arches, Terraces, and Exterior trim Detail may vary by Design Development & elevation styles.
7. Parking and Ramps are under development and may vary according to Master plan Design update.

The elegance of contemporary design with spacious interiors, abundant natural light, and breathtaking sea views.

Seafront Villas

Ground Floor

Unit Area: 210 m²

ENTRANCE	3.70*1.75
RECEPTION & FAMILY LIVING	5.00*6.50
DINING	2.60*5.00
KITCHEN	2.70*3.10
LAUNDRY	1.20*1.60
MAID'S ROOM	1.90*1.60
MAID'S BATH	1.10*1.60
G. BATHROOM	2.40*1.40
DRIVER'S BEDROOM	2.05*1.60
DRIVER'S BATHROOM	1.10*1.60
BEDROOM 4	3.40*3.40
BEDROOM 3	3.40*4.00
BEDROOM 2	3.60*3.45
BATHROOM	1.75*2.30
MASTER BEDROOM	3.60*3.75
DRESSING	4.65*1.70
DRESSER	2.20*1.30
MASTER BATHROOM	2.20*2.15

Disclaimer

1. All dimensions will be Measured as Carpet Area.
2. Actual area may vary from the stated area.
3. Drawing areas not to scale.
5. All materials, dimensions and drawings are approximate information, and subject to change without notice.
6. Actual unit areas, front windows, Arches, Terraces, and Exterior trim Detail may vary by Design Development & elevation styles.
7. Parking and Ramps are under development and may vary according to Master plan Design update.



GROUND FLOOR

Seafront Villas

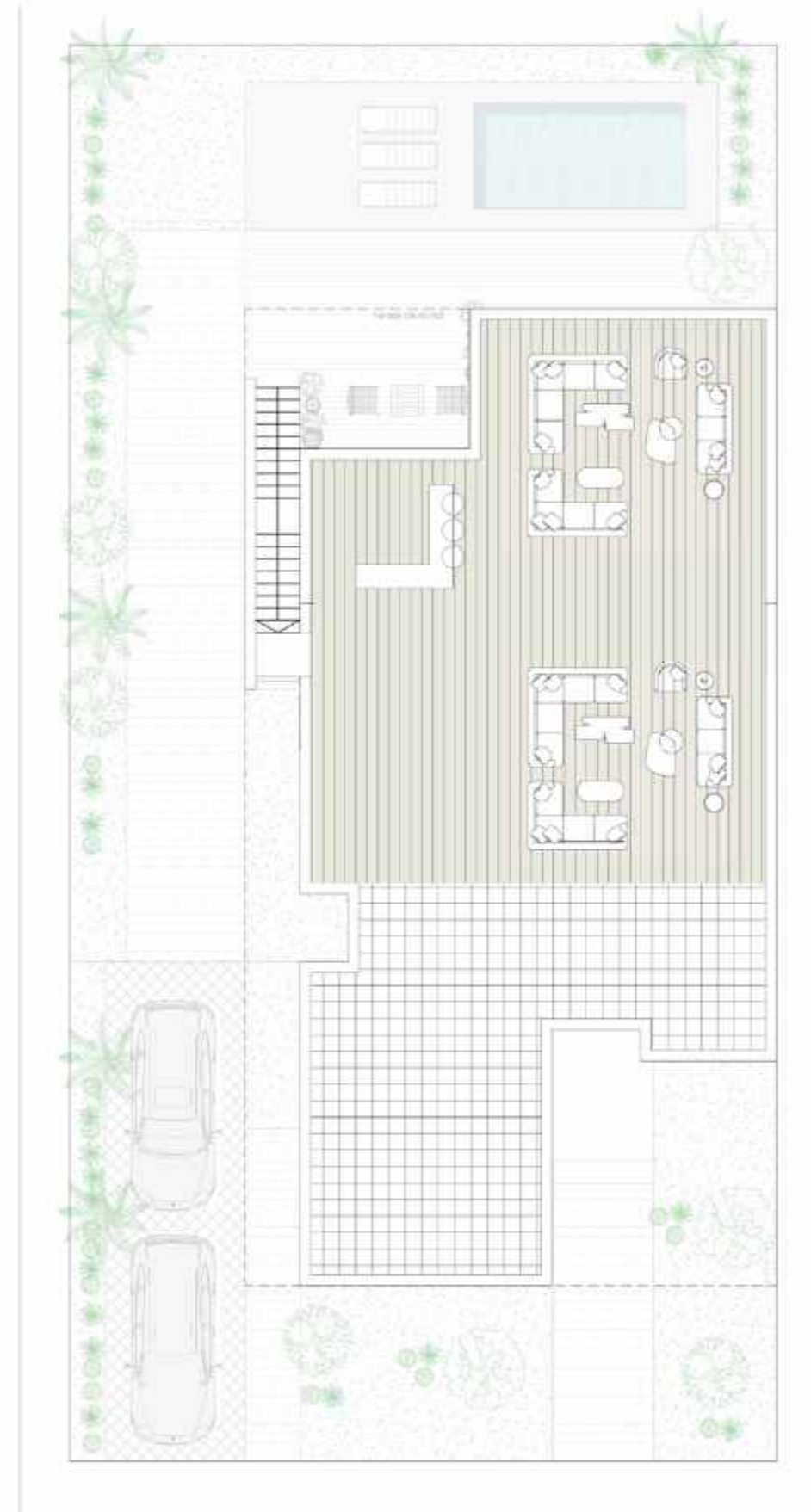
Roof

Roof Top Area: 72 m²

Terrace Area: 72 m²

Disclaimer

1. All dimensions will be Measured as Carpet Area.
2. Actual area may vary from the stated area.
3. Drawing areas not to scale.
5. All materials, dimensions and drawings are approximate information, and subject to change without notice.
6. Actual unit areas, front windows, Arches, Terraces, and Exterior trim Detail may vary by Design Development & elevation styles.
7. Parking and Ramps are under development and may vary according to Master plan Design update.



Roof



Disclaimer

1. All dimensions will be Measured as Carpet Area.
2. Actual area may vary from the stated area.
3. Drawing areas not to scale.
4. All materials, dimensions and drawings are approximate information, and subject to change without notice.
5. All materials, dimensions and drawings are approximate information, and subject to change without notice.
6. Actual unit areas, front windows, Arches, Terraces, and Exterior trim Detail may vary by Design Development & elevation styles.
7. Parking and Ramps are under development and may vary according to Master plan Design update.

The elegance of contemporary design with spacious interiors, abundant natural light, and breathtaking sea views.



Disclaimer

1. All dimensions will be Measured as Carpet Area.
2. Actual area may vary from the stated area.
3. Drawing areas not to scale.
5. All materials, dimensions and drawings are approximate information, and subject to change without notice.
6. Actual unit areas, front windows, Arches, Terraces, and Exterior trim Detail may vary by Design Development & elevation styles.
7. Parking and Ramps are under development and may vary according to Master plan Design update.

The elegance of contemporary design with spacious interiors, abundant natural light, and breathtaking sea views.



Disclaimer

1. All dimensions will be Measured as Carpet Area.
2. Actual area may vary from the stated area.
3. Drawing areas not to scale.
5. All materials, dimensions and drawings are approximate information, and subject to change without notice.
6. Actual unit areas, front windows, Arches, Terraces, and Exterior trim Detail may vary by Design Development & elevation styles.
7. Parking and Ramps are under development and may vary according to Master plan Design update.

The elegance of contemporary design with spacious interiors, abundant natural light, and breathtaking sea views.

Seafront Villas

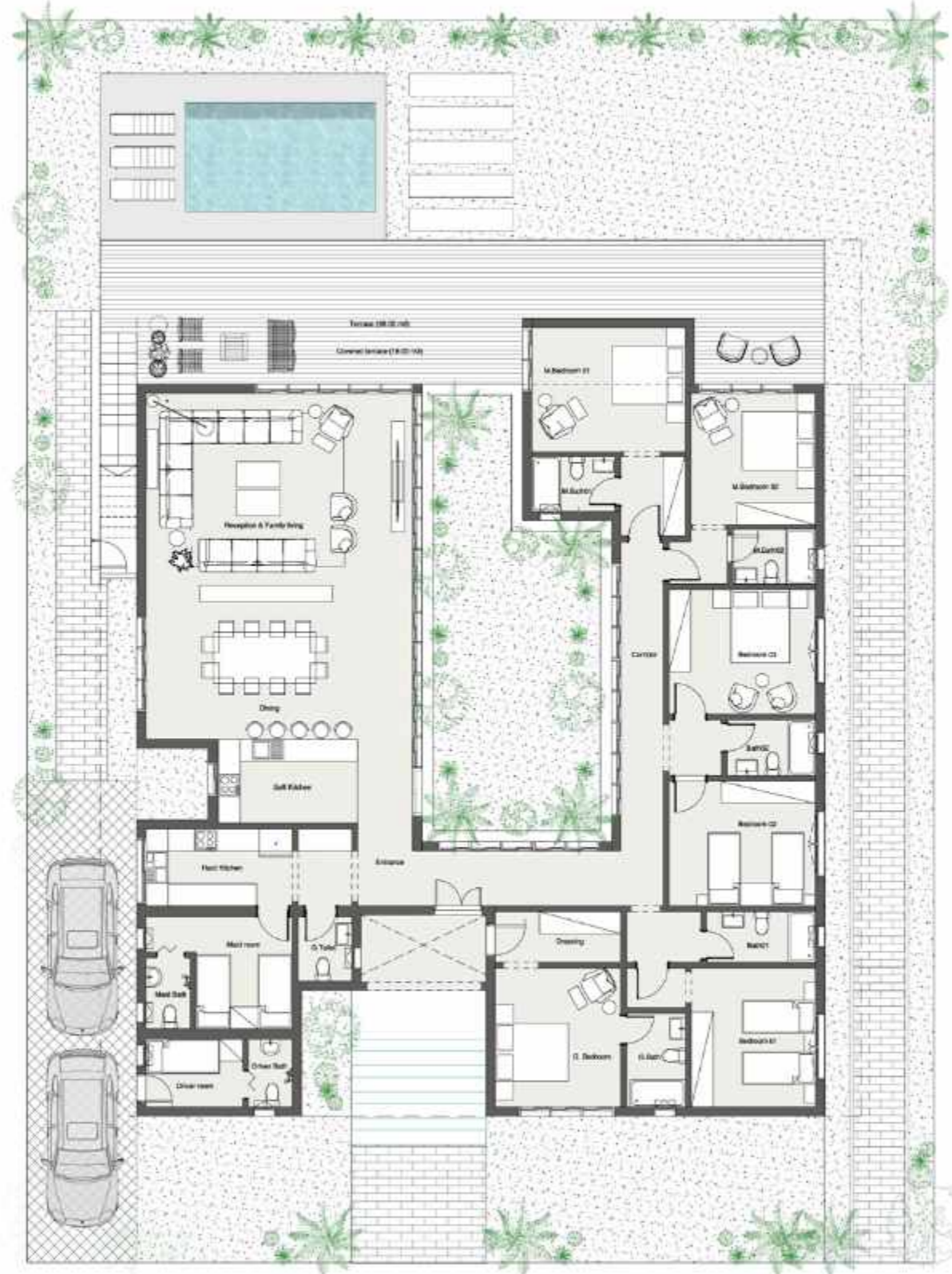
Ground Floor

Unit Area: 325 m²

ENTRANCE	1.5*3.75
RECEPTION & FAMILY LIVING	5.30*7.30
DINING	4.20*7.30
SOFT KITCHEN	2.30*3.85
HARD KITCHEN	2.10*4.15
G.TOILET	1.75*1.40
G.TOILET FOYET	2.10*1.40
MAID ROOM	3.00*2.65
MAID BATHROOM	1.95*1.20
DRIVER ROOM	1.85*2.65
DRIVER BATHROOM	1.85*1.20
G.BEDROOM	3.80*3.45
G.DRESSING	1.40*3.45
G.BATHROOM	2.55*1.60
BEDROOM 01	3.80*3.40
BATHROOM 01	1.40*2.95
BEDROOM 02	3.40*4.00
BATHROOM 02	1.50*2.40
BEDROOM 03	3.40*4.00
M.BEDROOM 02	3.60*3.40
M.BATHROOM 02	1.50*2.25
M.BEDROOM 01	3.40*4.20
M.BATHROOM 01	1.50*2.30
M . DRESSING 01	2.20*1.75

Disclaimer

1. All dimensions will be Measured as Carpet Area.
2. Actual area may vary from the stated area.
3. Drawing areas not to scale.
5. All materials, dimensions and drawings are approximate information, and subject to change without notice.
6. Actual unit areas, front windows, Arches, Terraces, and Exterior trim Detail may vary by Design Development & elevation styles.
7. Parking and Ramps are under development and may vary according to Master plan Design update.



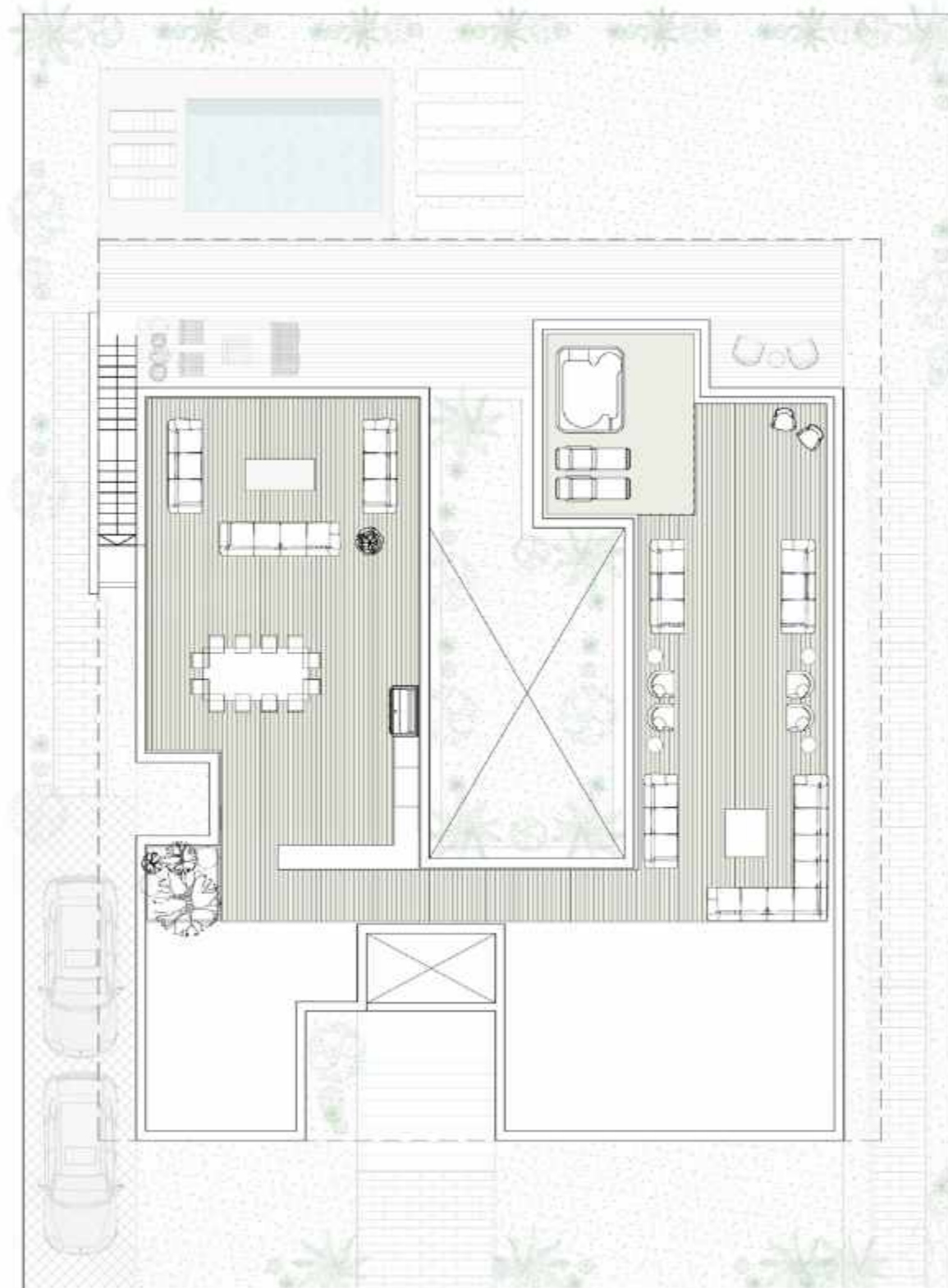
GROUND FLOOR

Seafront Villas

Roof

Roof Top Area: 325 m²

Terrace Area: 7.30*12.46



Disclaimer

1. All dimensions will be Measured as Carpet Area.
2. Actual area may vary from the stated area.
3. Drawing areas not to scale.
5. All materials, dimensions and drawings are approximate information, and subject to change without notice.
6. Actual unit areas, front windows, Arches, Terraces, and Exterior trim Detail may vary by Design Development & elevation styles.
7. Parking and Ramps are under development and may vary according to Master plan Design update.

Roof

Seaside Villas



Disclaimer

1. All dimensions will be Measured as Carpet Area.
2. Actual area may vary from the stated area.
3. Drawing areas not to scale.
5. All materials, dimensions and drawings are approximate information, and subject to change without notice.
6. Actual unit areas, front windows, Arches, Terraces, and Exterior trim Detail may vary by Design Development & elevation styles.
7. Parking and Ramps are under development and may vary according to Master plan Design update.

The elegance of contemporary design with spacious interiors, abundant natural light, and breathtaking sea views.



Disclaimer

1. All dimensions will be Measured as Carpet Area.
2. Actual area may vary from the stated area.
3. Drawing areas not to scale.
4. All materials, dimensions and drawings are approximate information, and subject to change without notice.
5. All materials, dimensions and drawings are approximate information, and subject to change without notice.
6. Actual unit areas, front windows, Arches, Terraces, and Exterior trim Detail may vary by Design Development & elevation styles.
7. Parking and Ramps are under development and may vary according to Master plan Design update.

The elegance of contemporary design with spacious interiors, abundant natural light, and breathtaking sea views.



Disclaimer

1. All dimensions will be Measured as Carpet Area.
2. Actual area may vary from the stated area.
3. Drawing areas not to scale.
5. All materials, dimensions and drawings are approximate information, and subject to change without notice.
6. Actual unit areas, front windows, Arches, Terraces, and Exterior trim Detail may vary by Design Development & elevation styles.
7. Parking and Ramps are under development and may vary according to Master plan Design update.

The elegance of contemporary design with spacious interiors, abundant natural light, and breathtaking sea views.

Seaside Villas

Ground Floor

Unit Area: 325 m²

ENTRANCE	2.75*2.05
RECEPTION & FAMILY LIVING	7.00*5.80
DINING	4.55*3.70
KITCHEN	3.50*3.60
LAUNDRY	1.45*1.40
MAID'S ROOM	1.75*2.10
MAID'S TOILET	1.00*2.10
DRIVER ROOM	1.70*2.10
DRIVER BATH	1.00*2.10
BATHROOM	2.80*1.40
G.BEDROOM	3.40*3.60
G.BATH	1.70*2.30

Disclaimer

1. All dimensions will be Measured as Carpet Area.
2. Actual area may vary from the stated area.
3. Drawing areas not to scale.
5. All materials, dimensions and drawings are approximate information, and subject to change without notice.
6. Actual unit areas, front windows, Arches, Terraces, and Exterior trim Detail may vary by Design Development & elevation styles.
7. Parking and Ramps are under development and may vary according to Master plan Design update.



GROUND FLOOR

Seaside Villas

First Floor

Unit Area: 325 m²

M.BEDROOM 1	3.60*4.50
M.BATHROOM 1	1.65*3.20
TERRACE	2.80*4.5
	1.30*5.30
M.BEDROOM 2	3.40*3.60
M.BATHROOM 2	1.70*2.30
M.BEDROOM 3	3.40*3.60
M.BATHROOM 3	1.70*2.30
BEDROOM 4	3.40*3.60
BATHROOM	1.60*2.30
BEDROOM 5	3.40*4.90

Disclaimer

1. All dimensions will be Measured as Carpet Area.
2. Actual area may vary from the stated area.
3. Drawing areas not to scale.
5. All materials, dimensions and drawings are approximate information, and subject to change without notice.
6. Actual unit areas, front windows, Arches, Terraces, and Exterior trim Detail may vary by Design Development & elevation styles.
7. Parking and Ramps are under development and may vary according to Master plan Design update.



FIRST FLOOR

Lagoonside Twins



Disclaimer

1. All dimensions will be Measured as Carpet Area.
2. Actual area may vary from the stated area.
3. Drawing areas not to scale.
5. All materials, dimensions and drawings are approximate information, and subject to change without notice.
6. Actual unit areas, front windows, Arches, Terraces, and Exterior trim Detail may vary by Design Development & elevation styles.
7. Parking and Ramps are under development and may vary according to Master plan Design update.

The elegance of contemporary design with spacious interiors, abundant natural light, and breathtaking sea views.



Disclaimer

1. All dimensions will be Measured as Carpet Area.
2. Actual area may vary from the stated area.
3. Drawing areas not to scale.
4. All materials, dimensions and drawings are approximate information, and subject to change without notice.
5. All materials, dimensions and drawings are approximate information, and subject to change without notice.
6. Actual unit areas, front windows, Arches, Terraces, and Exterior trim Detail may vary by Design Development & elevation styles.
7. Parking and Ramps are under development and may vary according to Master plan Design update.

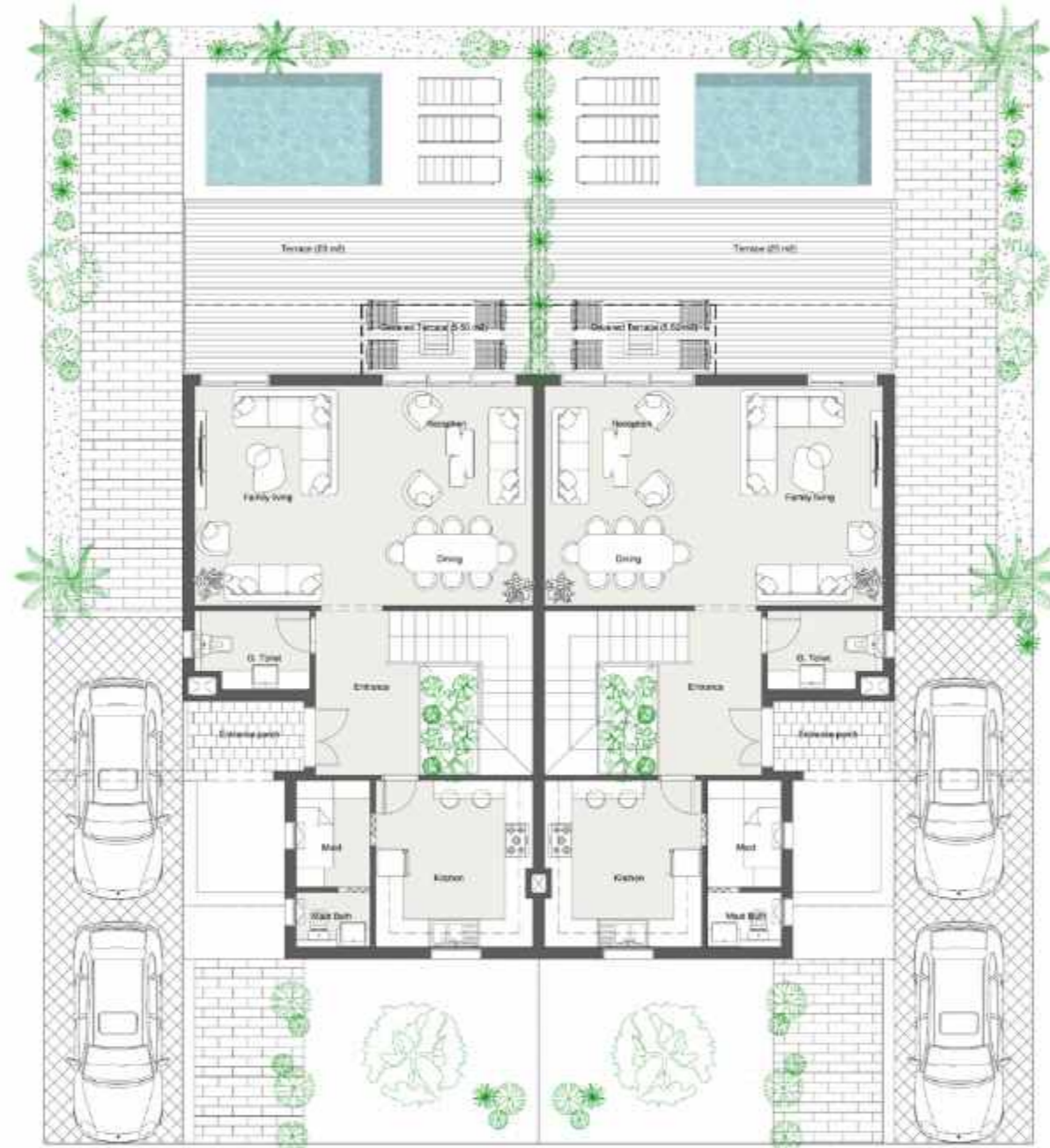
The elegance of contemporary design with spacious interiors, abundant natural light, and breathtaking sea views.

Lagoonside Twins

Ground Floor

Unit Area: 185 m²

ENTRANCE	3.60*1.60
RECEPTION	4.75*7.30
G. TOILET	1.70*2.50
KITCHEN	3.60*3.40
MAID ROOM	2.30*1.60
MAID BATH	1.20*1.60



Disclaimer

1. All dimensions will be Measured as Carpet Area.
2. Actual area may vary from the stated area.
3. Drawing areas not to scale.
5. All materials, dimensions and drawings are approximate information, and subject to change without notice.
6. Actual unit areas, front windows, Arches, Terraces, and Exterior trim Detail may vary by Design Development & elevation styles.
7. Parking and Ramps are under development and may vary according to Master plan Design update.

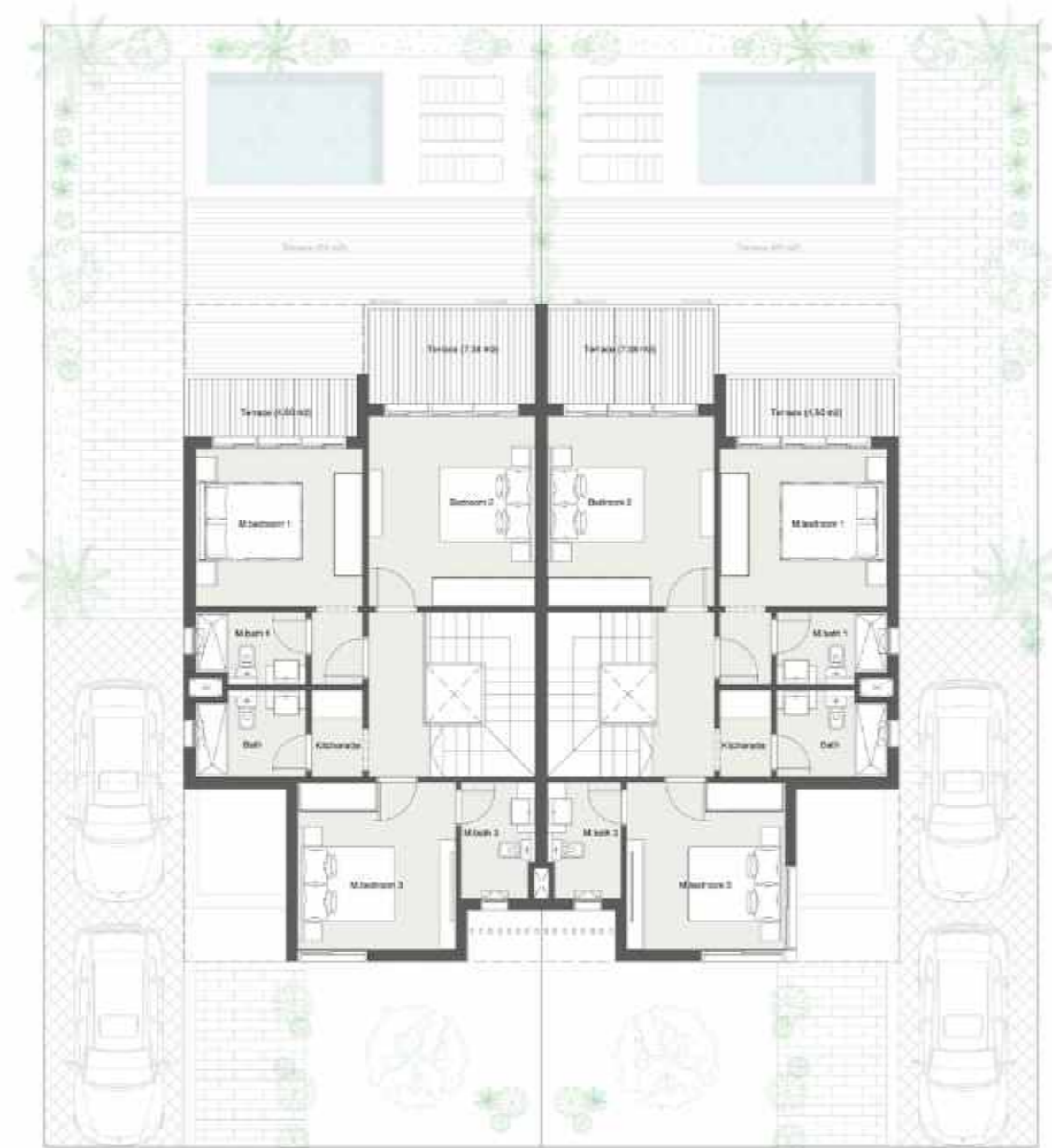
GROUND FLOOR

Lagoonside Twins

First floor

Unit Area: 185 m²

M.BEDROOM 1	3.40*3.60
M.BATHROOM 1	1.55*2.40
TERRACE 1	1.25*3.60
BEDROOM 2	4.10*3.60
TERRACE 2	2.05*3.60
KITCHENETTE	1.85*1.10
BATHROOM	1.85*2.40
M.BEDROOM 3	3.60*3.40
M.BATHROOM 3	2.50*1.60



Disclaimer

1. All dimensions will be Measured as Carpet Area.
2. Actual area may vary from the stated area.
3. Drawing areas not to scale.
5. All materials, dimensions and drawings are approximate information, and subject to change without notice.
6. Actual unit areas, front windows, Arches, Terraces, and Exterior trim Detail may vary by Design Development & elevation styles.
7. Parking and Ramps are under development and may vary according to Master plan Design update.

First floor

